

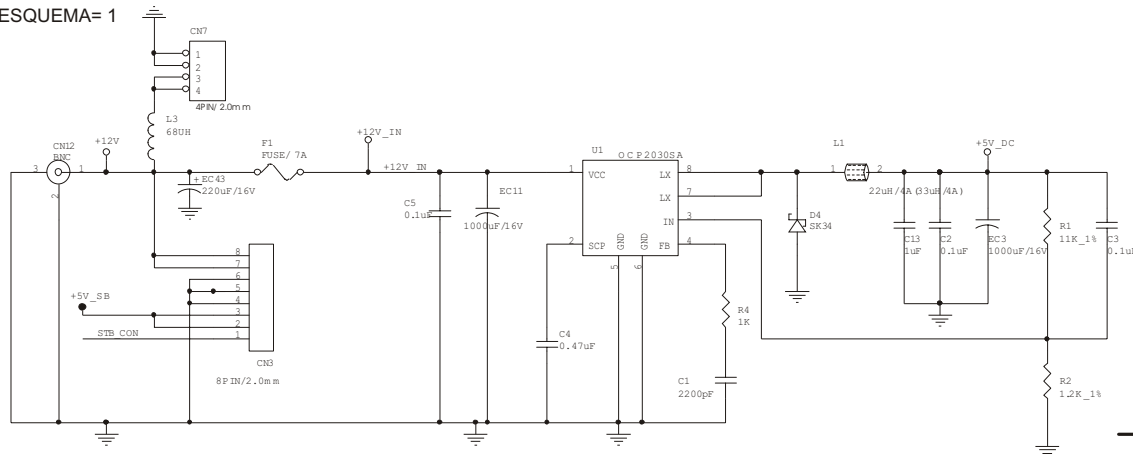
Philco



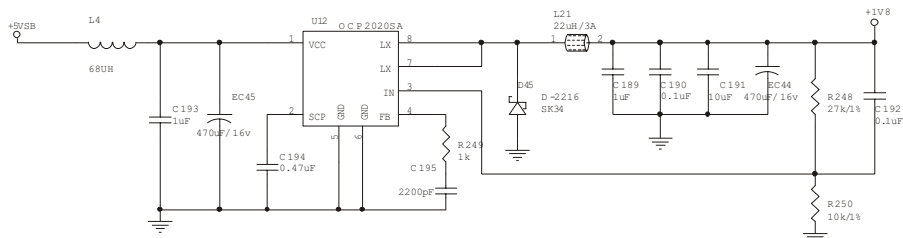
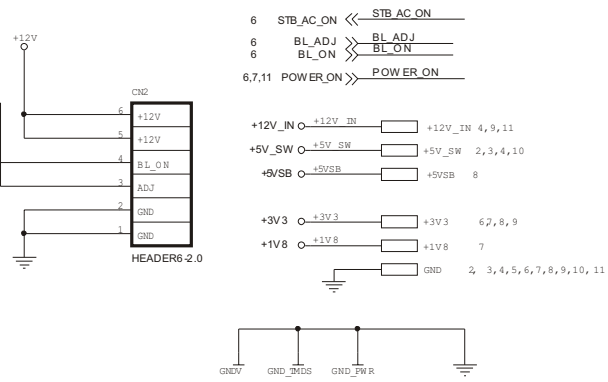
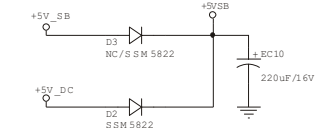
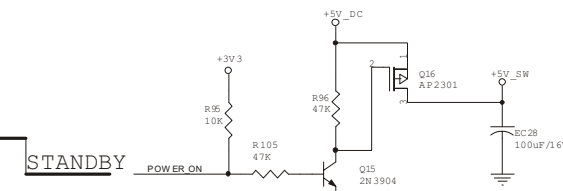
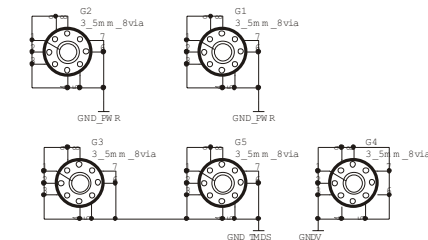
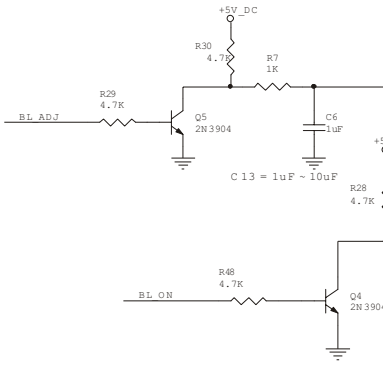
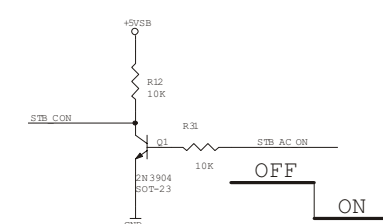
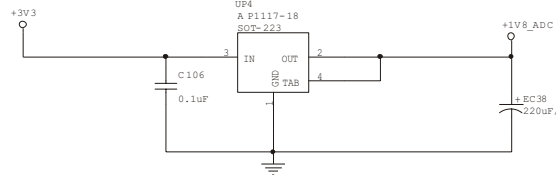
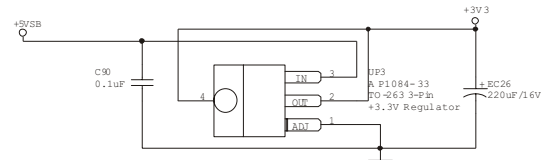
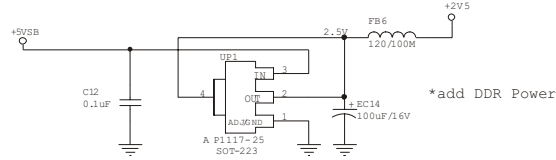
**T
V
P
H
1
9
L
C
D**

0800 415300

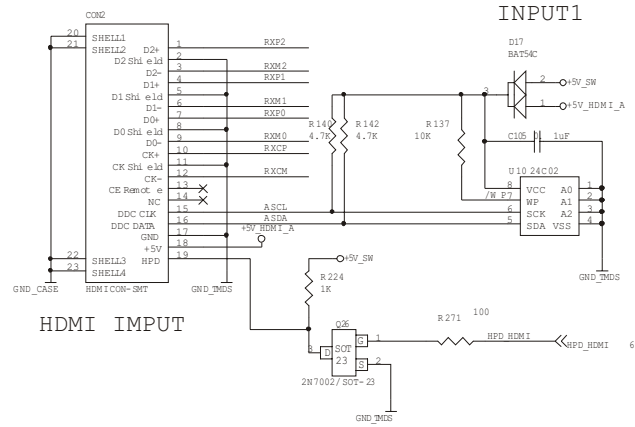
suporte.tecnico@britania.com.br



SPV 7100 Power (1.8V / 2.5V / 3.3V)

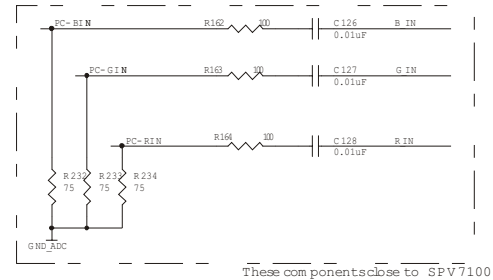
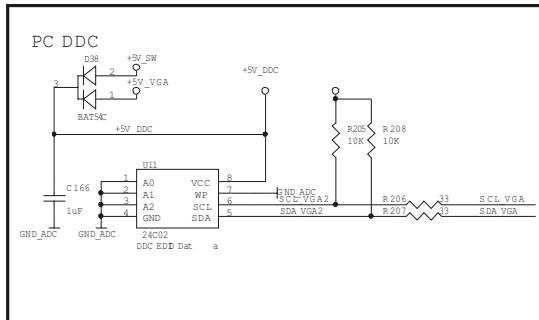
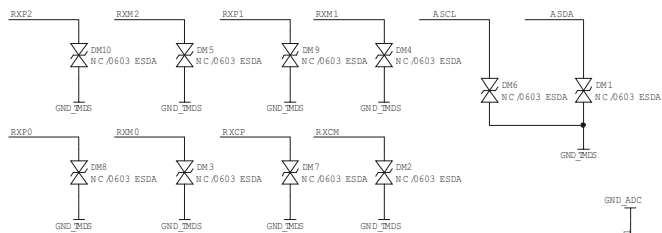
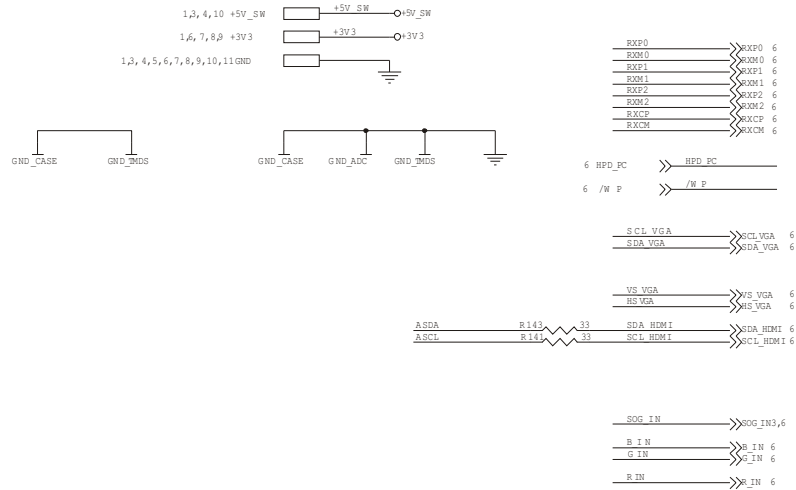


ESTÁGIO ALIMENTAÇÃO PRIMÁRIA



HDMI INPUT

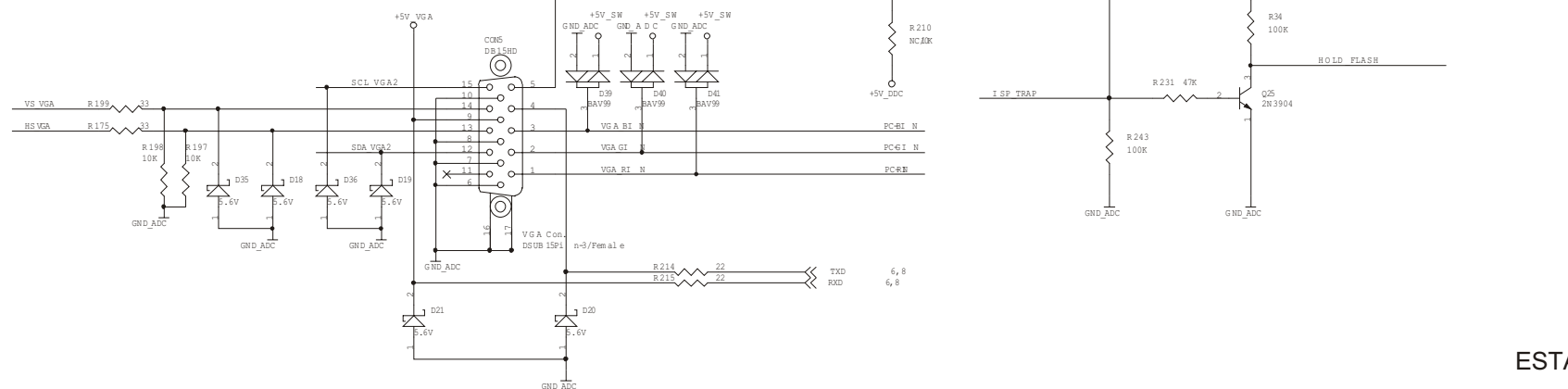
HDMI Plug Control



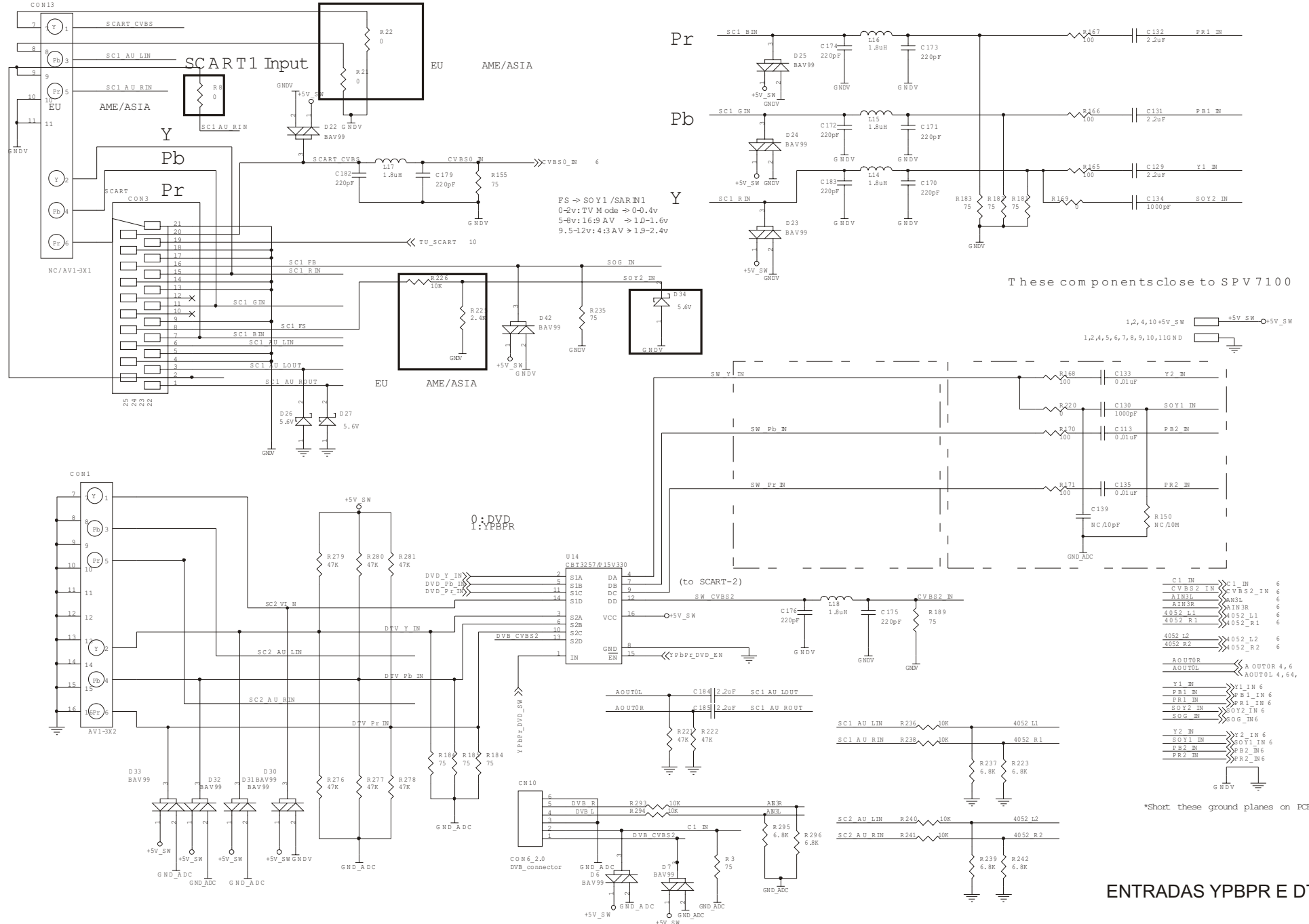
These components close to SPV7100

VGA Analog Input

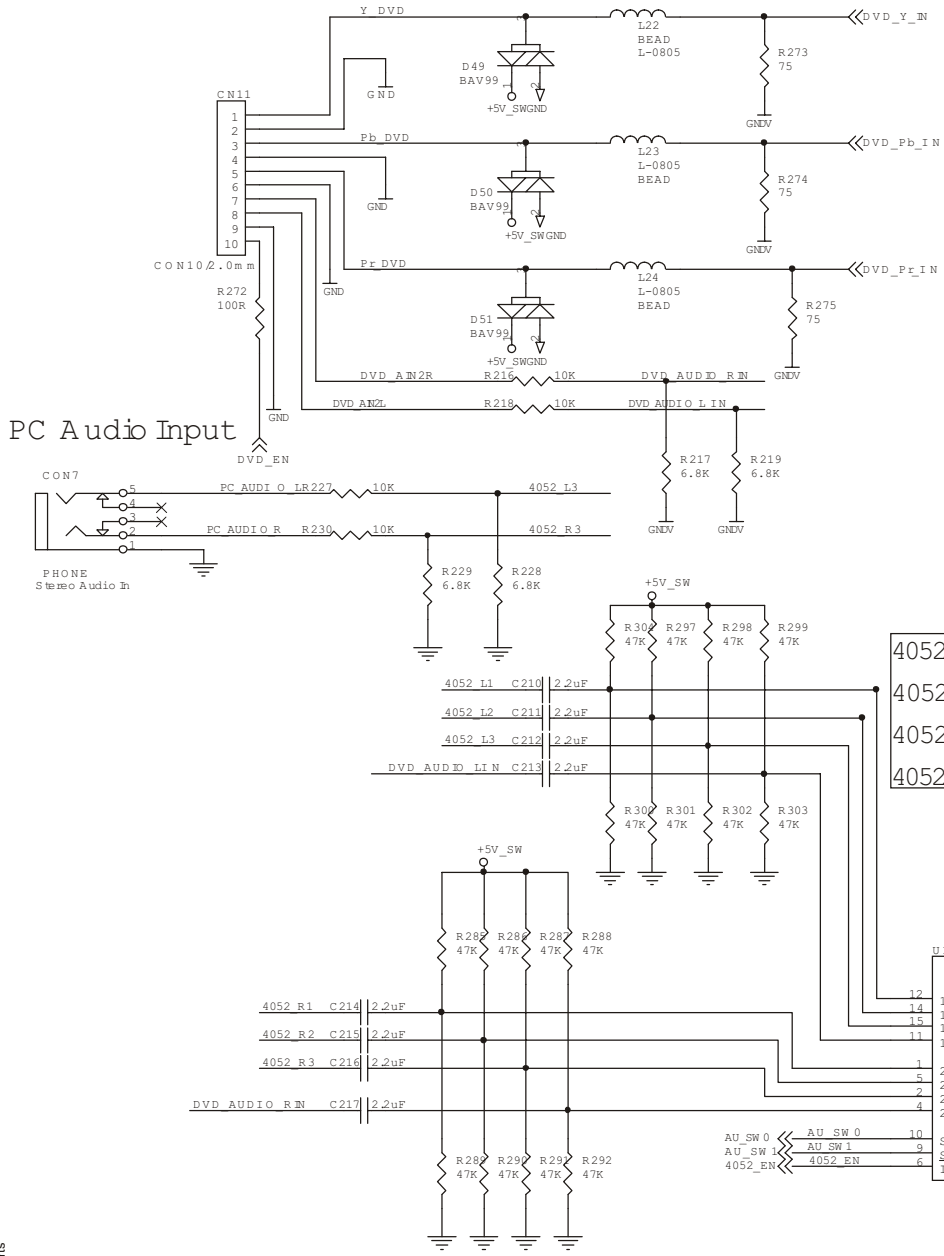
*Short these ground planes on PCB



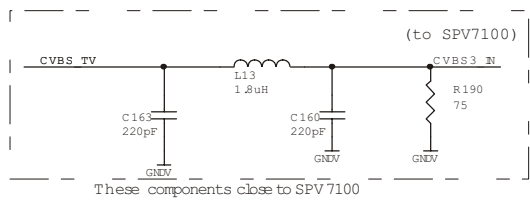
New Parts



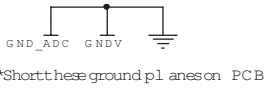
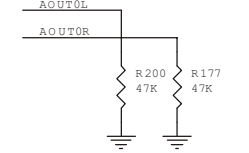
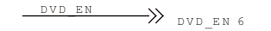
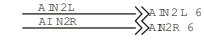
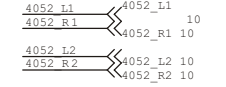
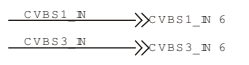
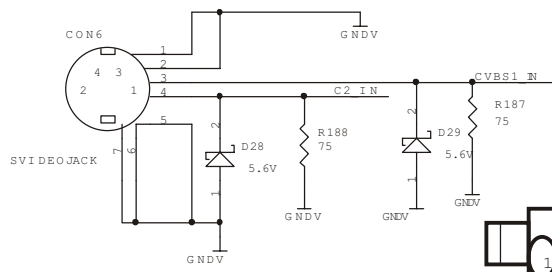
New Parts



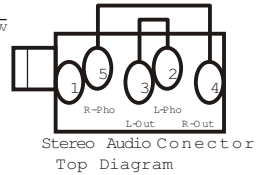
Tuner Input



S_V ideo Input

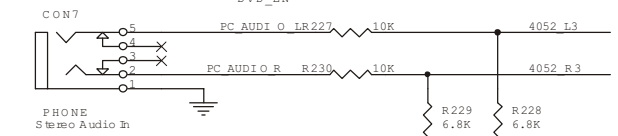


*Short these ground planes on PCB



4052 ch0:SC/SV/AV1
 4052 ch1:Y Pr, AV2
 4052 ch2:PC
 4052 ch3:DVD
 4052 -> SPV 7100 CH 2
 DVD -> SPV 7100 CH 3

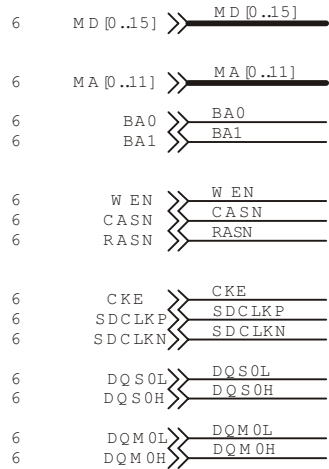
PC Audio Input



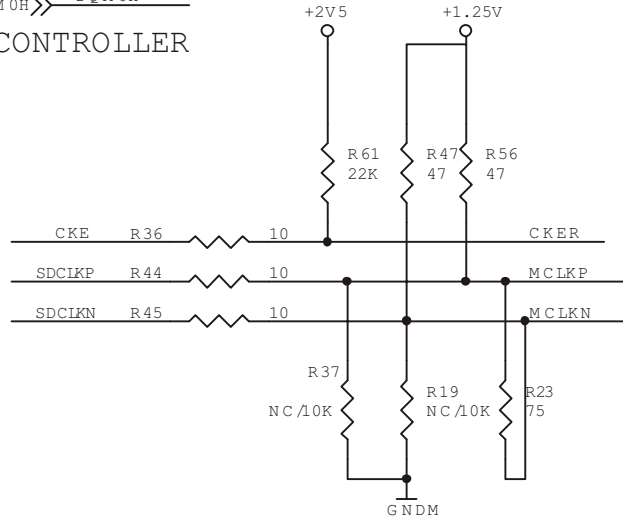
ENTRADAS ÁUDIO E S-VÍDEO

New Parts

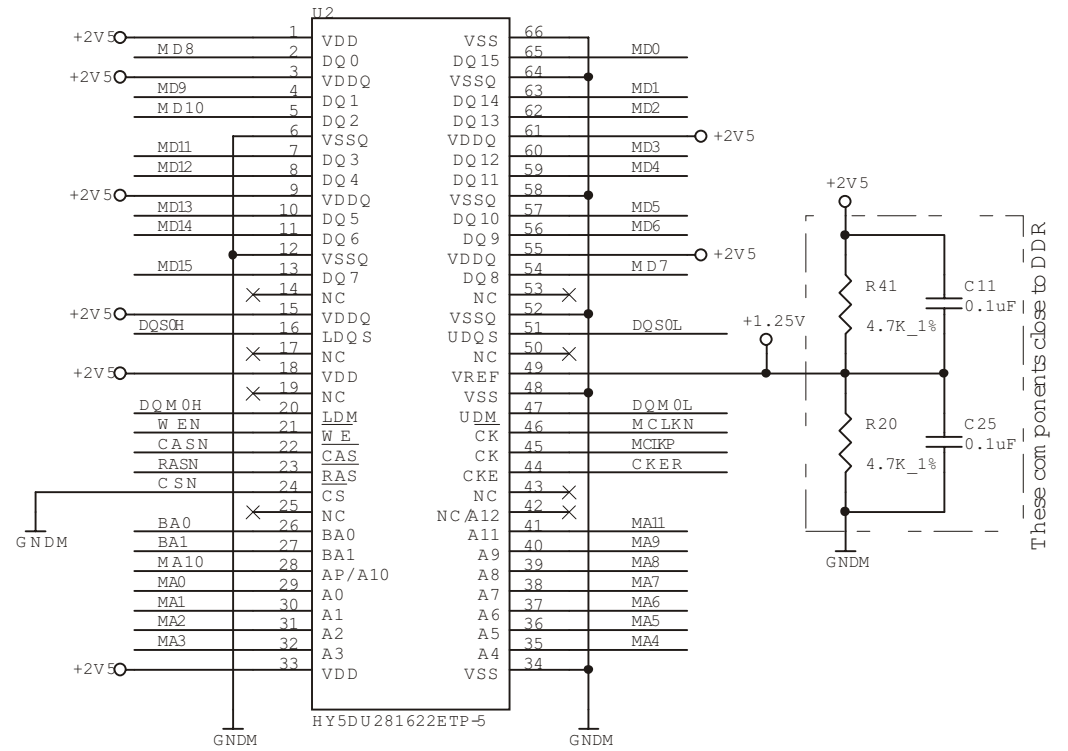
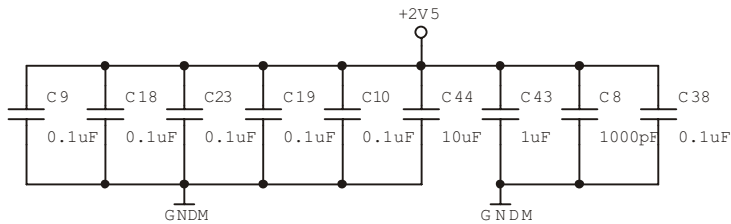
SDRAM Data Bus



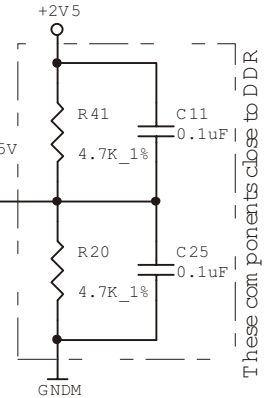
SDRAM CONTROLLER SIGNAL



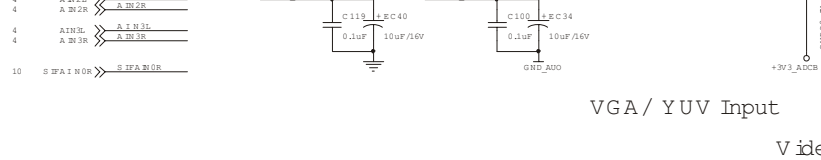
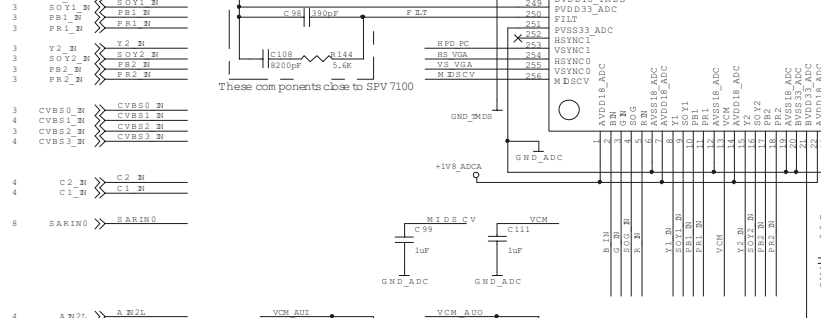
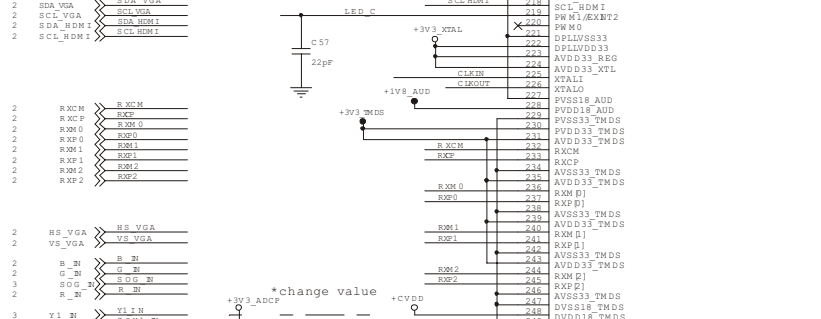
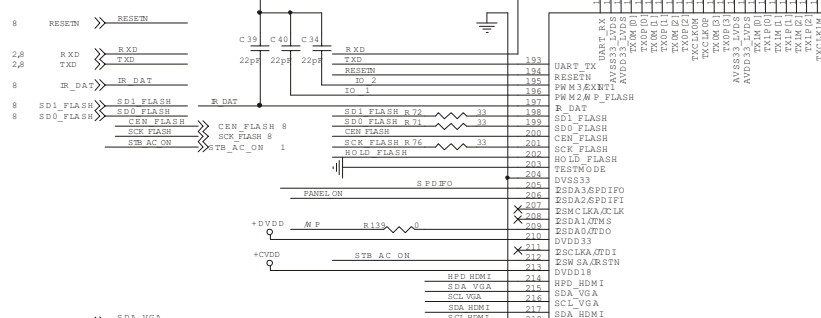
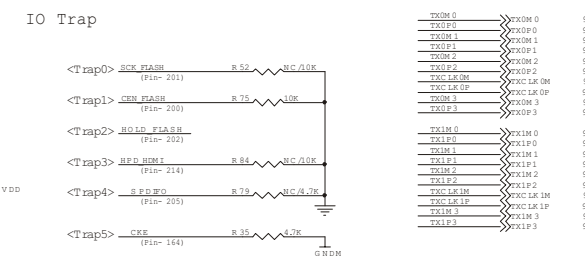
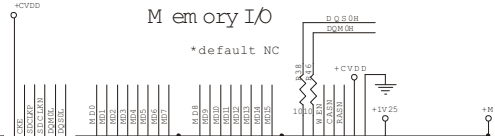
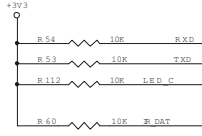
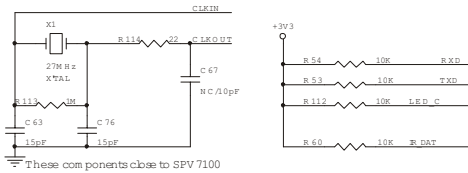
SOURCE POWER /GND (2.5V)



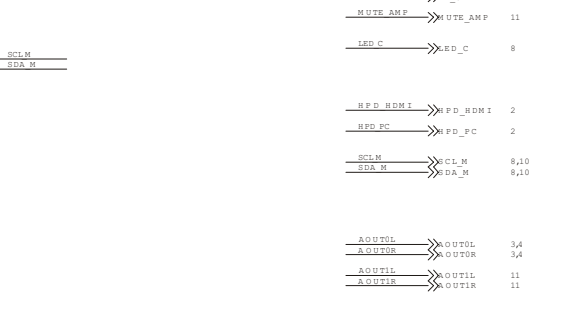
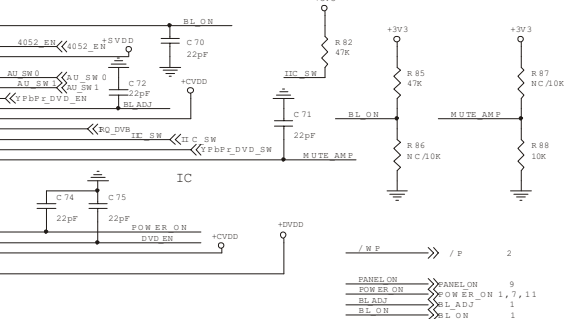
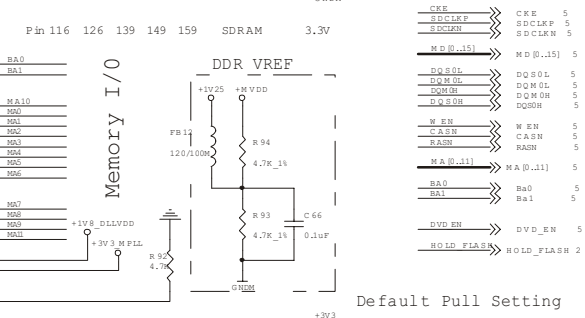
HY5DU28 1622ETP (128Mb/2Mx16x4B)



ESTÁGIO DDR SDRAM



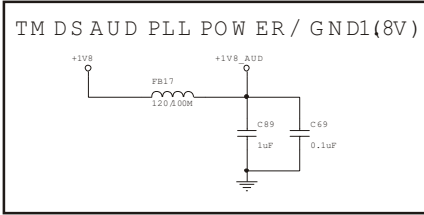
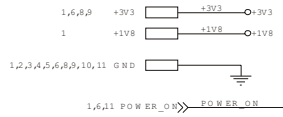
SPV7100E
CAFE



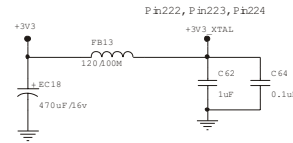
CHIP SET SPV7100

New Parts

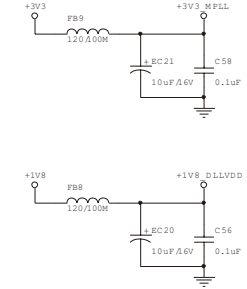
REFERÊNCIA ESQUEMA= 7



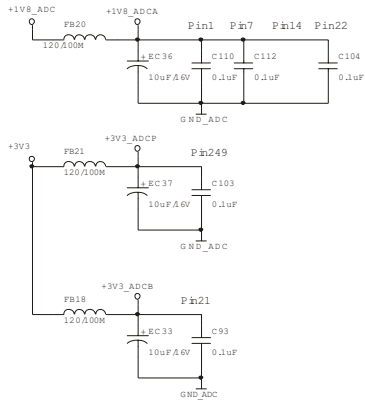
X T A L P O W E R / G N D (3.3 V)



P L L P O W E R / G N D (3.3 V / 1.8 V)



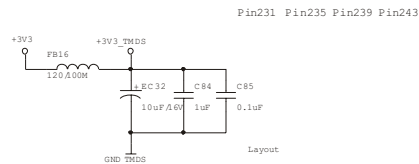
A D C P O W E R / G N D (1.8 V / 3.3 V)



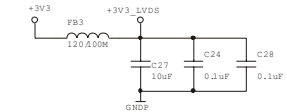
Ferrite Beed Spec:
 FB : Rdc=0.2, Z=300/100M Hz, Idc=500mA - MCB2012S301H
 FB_L : Rdc=0.015, Z=120/100M Hz, Idc=6000mA ~ MHC3216S121W
 FB_S : Rdc=0.35, Z=75/100M Hz, Idc=300mA - MCB1608U750F



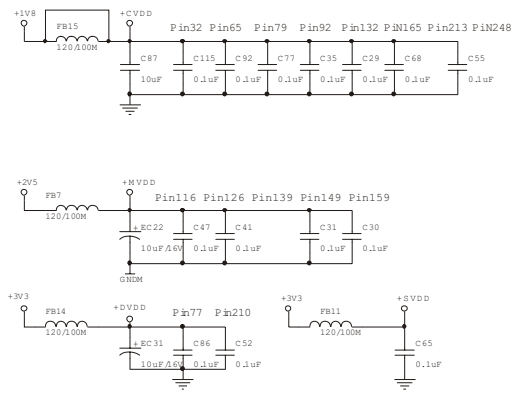
T M D S P O W E R / G N D (1.8 V / 3.3 V)



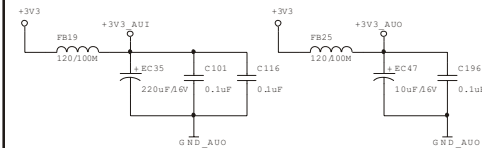
L V D S P O W E R / G N D (3.3 V)



S O U R C E P O W E R / G N D (1.8 V / 2.5 V / 3.3 V)



S A R A D C / S I F / A U D I O P O W E R / G N D (3.3 V)

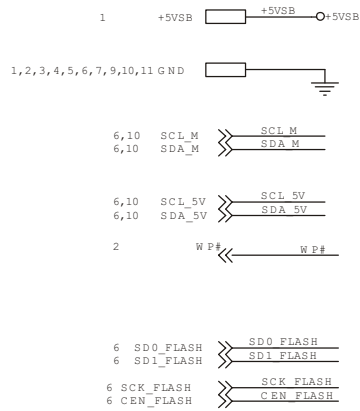


S P V 7 1 0 0 E - P a d

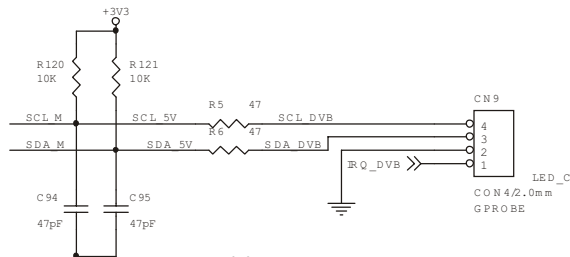
| UTB | E-Pad | E-Pad |
|-----|-------|-------|
| 247 | E-Pad | 298 |
| 248 | E-Pad | 299 |
| 249 | E-Pad | 300 |
| 250 | E-Pad | 301 |
| 251 | E-Pad | 302 |
| 252 | E-Pad | 303 |
| 253 | E-Pad | 304 |
| 254 | E-Pad | 305 |
| 255 | E-Pad | 306 |
| 256 | E-Pad | 307 |
| 257 | E-Pad | 308 |
| 258 | E-Pad | 309 |
| 259 | E-Pad | 310 |
| 260 | E-Pad | 311 |
| 261 | E-Pad | 312 |
| 262 | E-Pad | 313 |
| 263 | E-Pad | 314 |
| 264 | E-Pad | 315 |
| 265 | E-Pad | 316 |
| 266 | E-Pad | 317 |
| 267 | E-Pad | 318 |
| 268 | E-Pad | 319 |
| 269 | E-Pad | 320 |
| 270 | E-Pad | 321 |
| 271 | E-Pad | 322 |
| 272 | E-Pad | 323 |
| 273 | E-Pad | 324 |
| 274 | E-Pad | 325 |
| 275 | E-Pad | 326 |
| 276 | E-Pad | 327 |
| 277 | E-Pad | 328 |
| 278 | E-Pad | 329 |
| 279 | E-Pad | 330 |
| 280 | E-Pad | 331 |
| 281 | E-Pad | 332 |
| 282 | E-Pad | 333 |
| 283 | E-Pad | 334 |
| 284 | E-Pad | 335 |
| 285 | E-Pad | 336 |
| 286 | E-Pad | 337 |
| 287 | E-Pad | 338 |
| 288 | E-Pad | 339 |
| 289 | E-Pad | 340 |
| 290 | E-Pad | 341 |
| 291 | E-Pad | 342 |
| 292 | E-Pad | 343 |
| 293 | E-Pad | 344 |
| 294 | E-Pad | 345 |
| 295 | E-Pad | 346 |
| 296 | E-Pad | 347 |
| 297 | E-Pad | 348 |

ESTÁGIO ALIMENTAÇÕES SECUNDÁRIAS

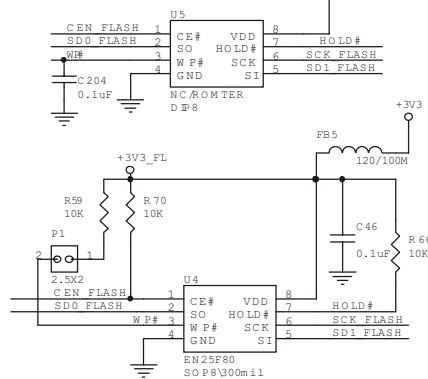
Hardware Reset



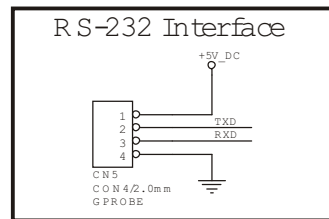
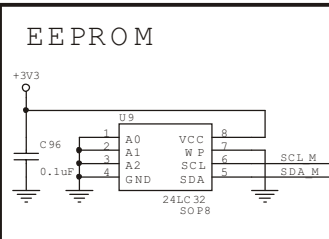
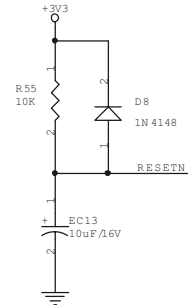
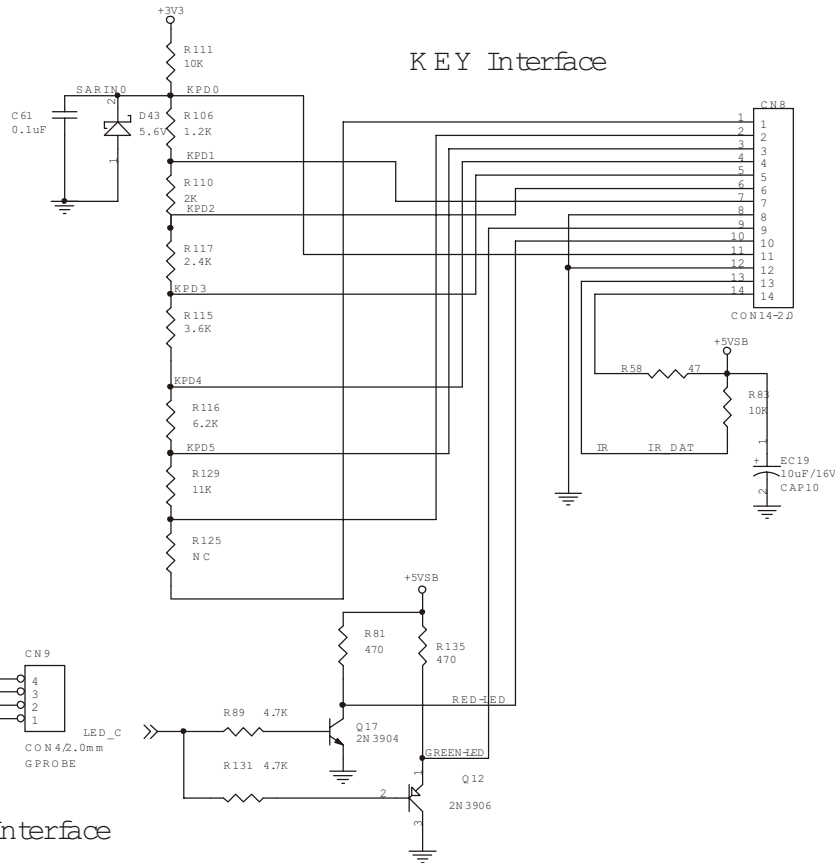
IIC Level shift circuit



Flash Interface

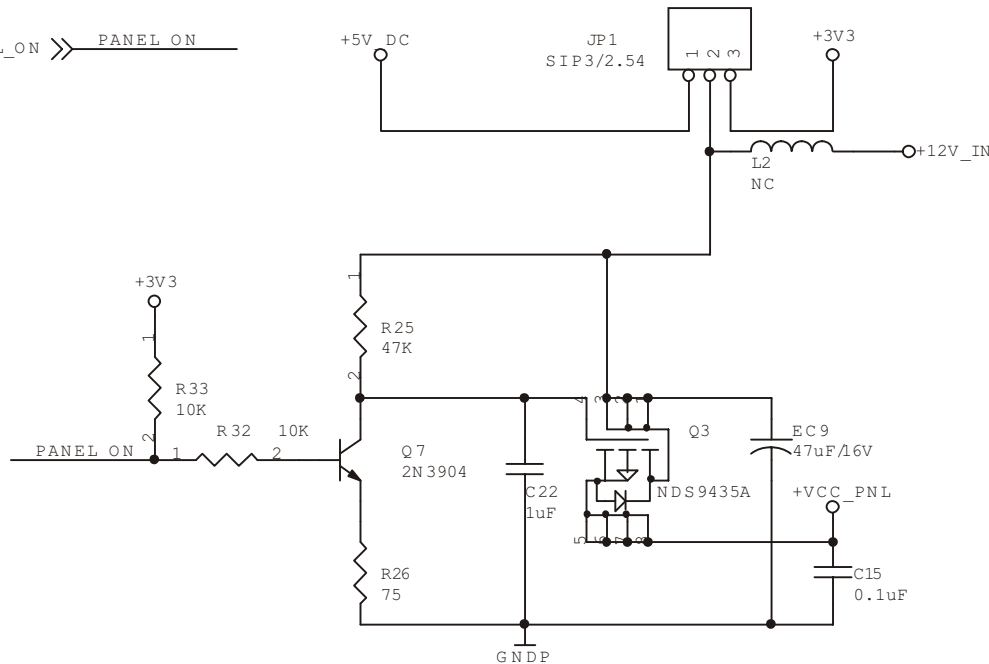
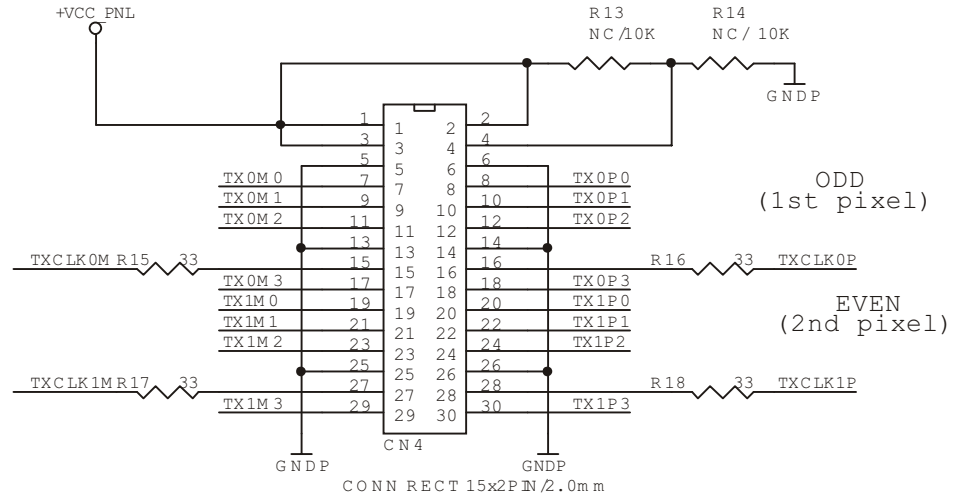
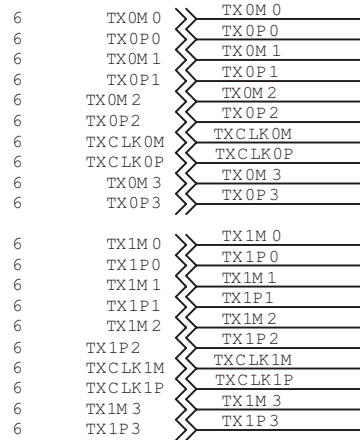
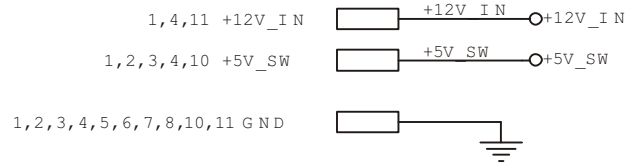


KEY Interface

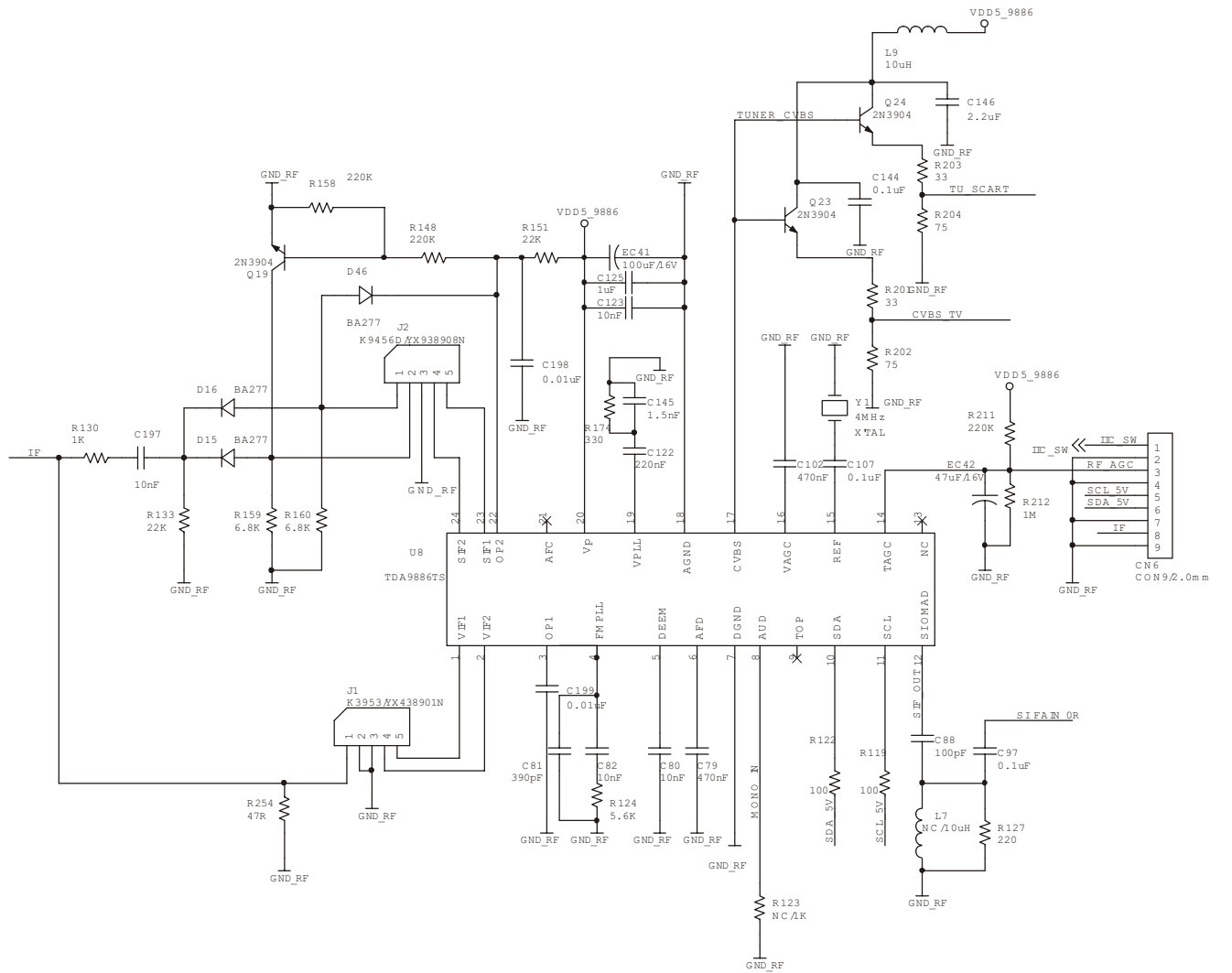
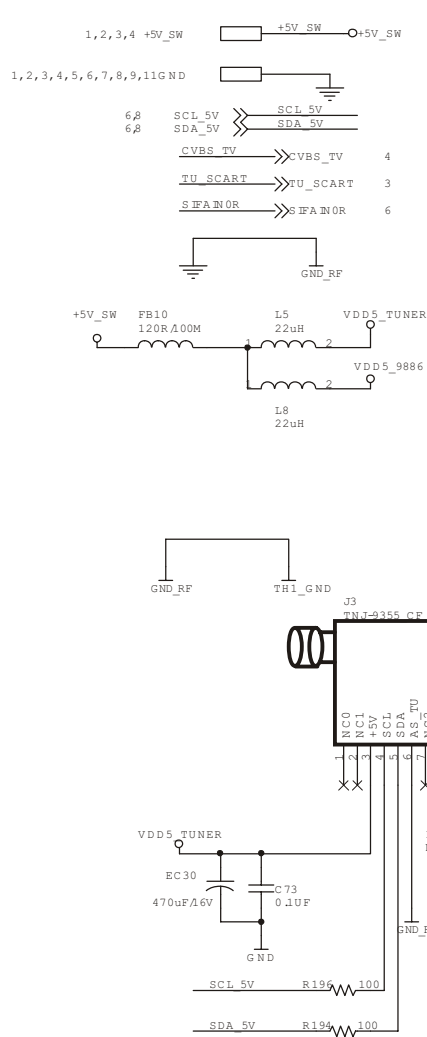


INTERFACE MCU

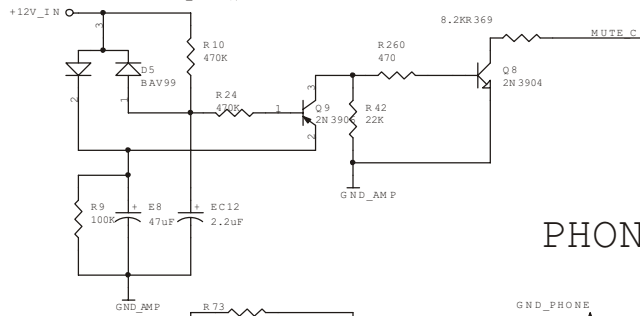
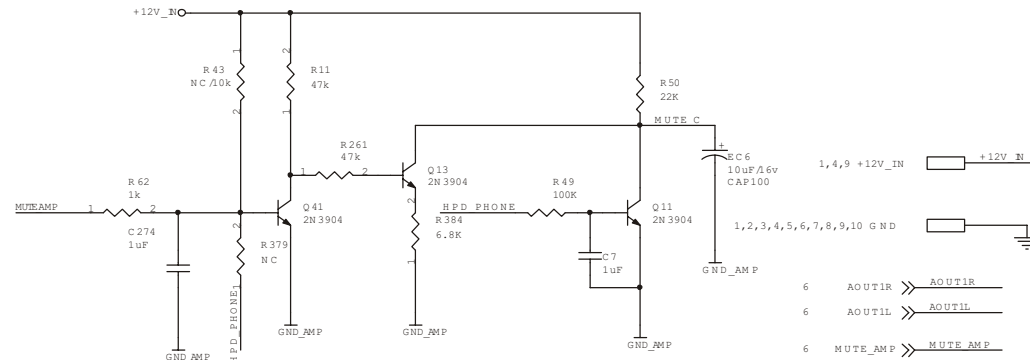
REFERÊNCIA ESQUEMA= 9



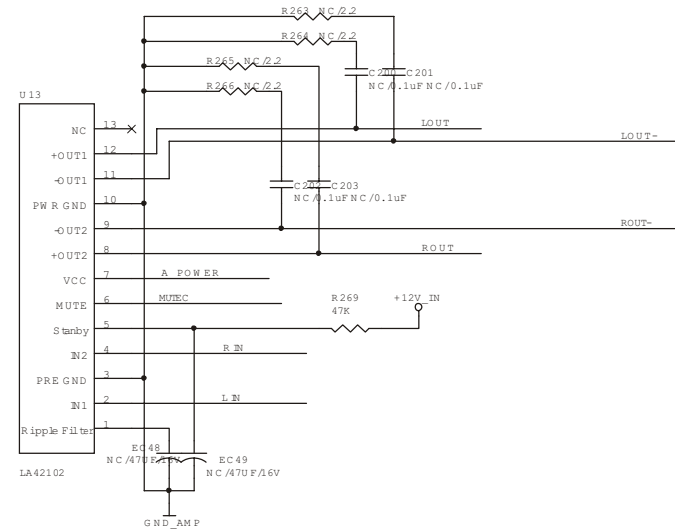
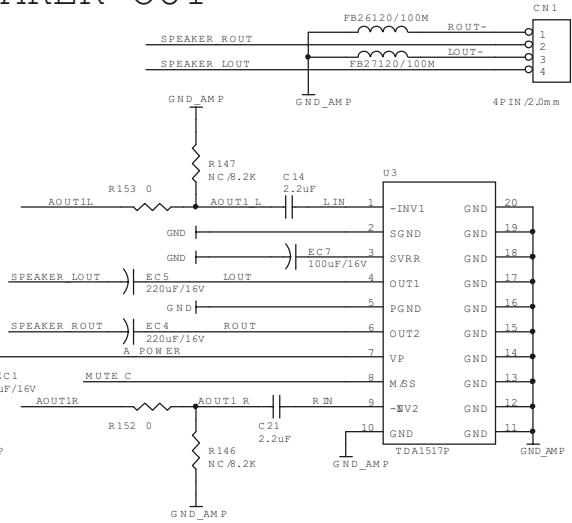
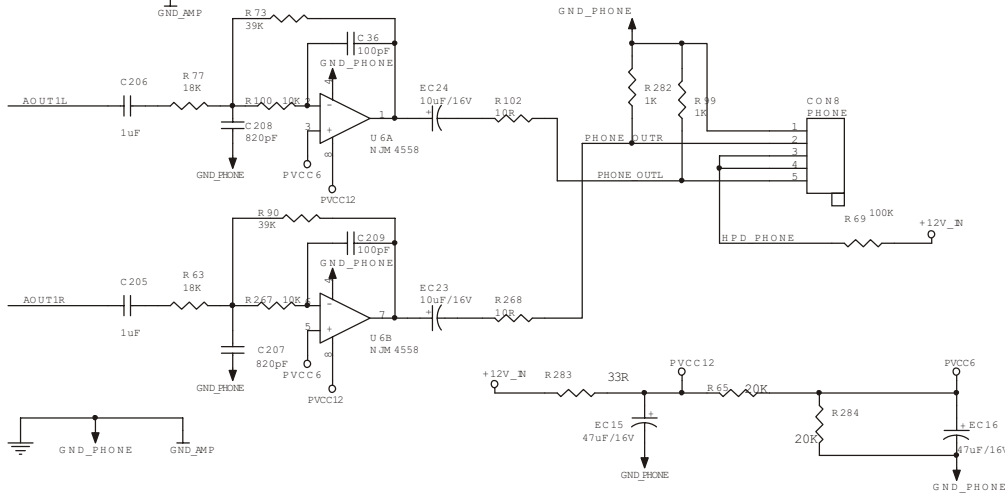
CONECTOR / ALIMENTAÇÃO DISPLAY



SPEAKER OUT



PHONE OUT



AMPLIFICADOR DE ÁUDIO

New Parts