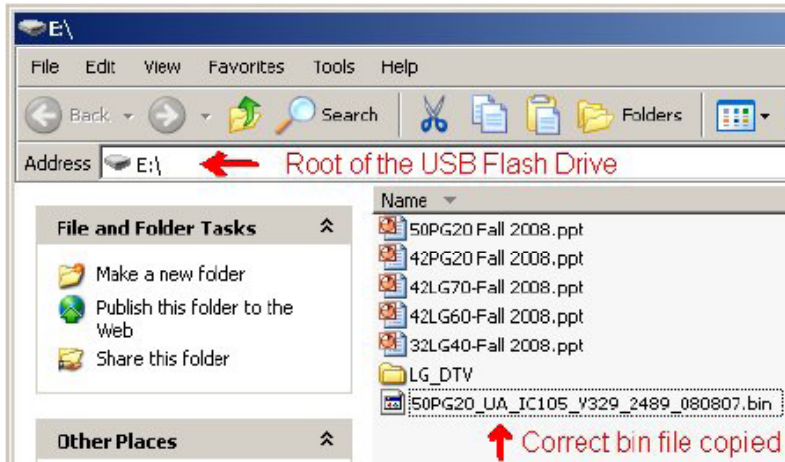


Generic Plasma USB Automatic Software Download Instructions

1) Download the Software File.



2) Copy new software (xxx.bin) into the root of the Jump Drive. Make sure you have the correct software file.

3) With TV turned on, insert USB flash drive.

4) You can see the message

“TV Software Upgrade” (See figure on right)

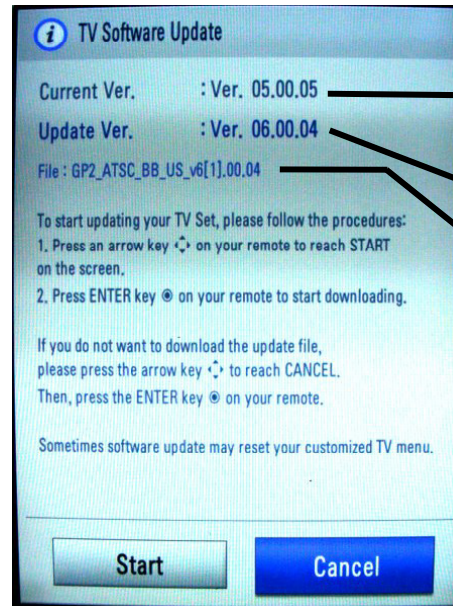
5) Cursor left and highlight "START" Button and push “Enter” button using the remote control.

6) You can see the download progress Bar.

7) Do not unplug until unit has automatically restarted.

8) When download is completed, you will see “COMPLETE”.

9) Your TV will be restarted automatically.



Currently Installed Version

Software Version found on the USB Flash Drive

File found on the USB Flash Drive

Highlight Start Press Select

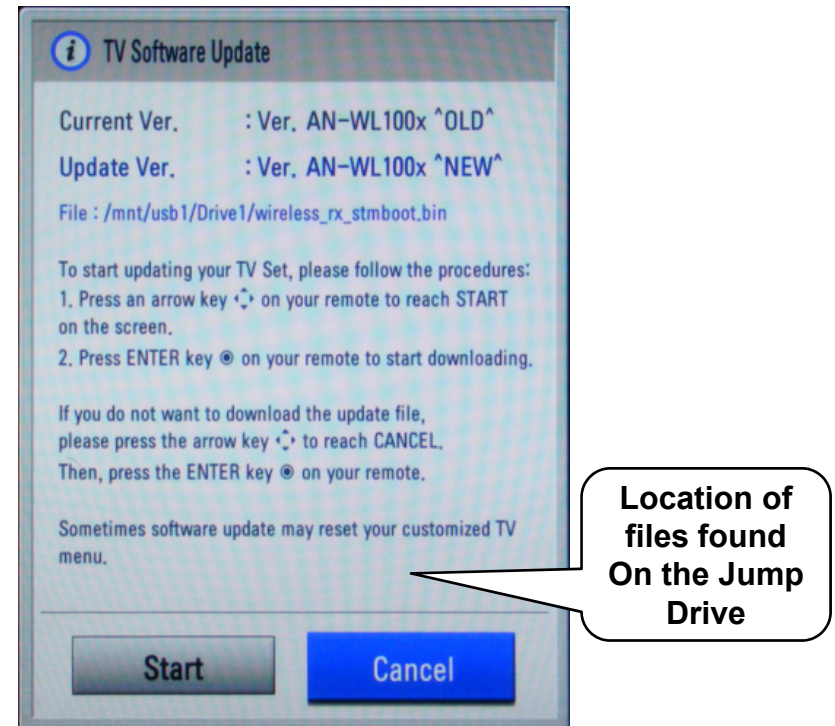
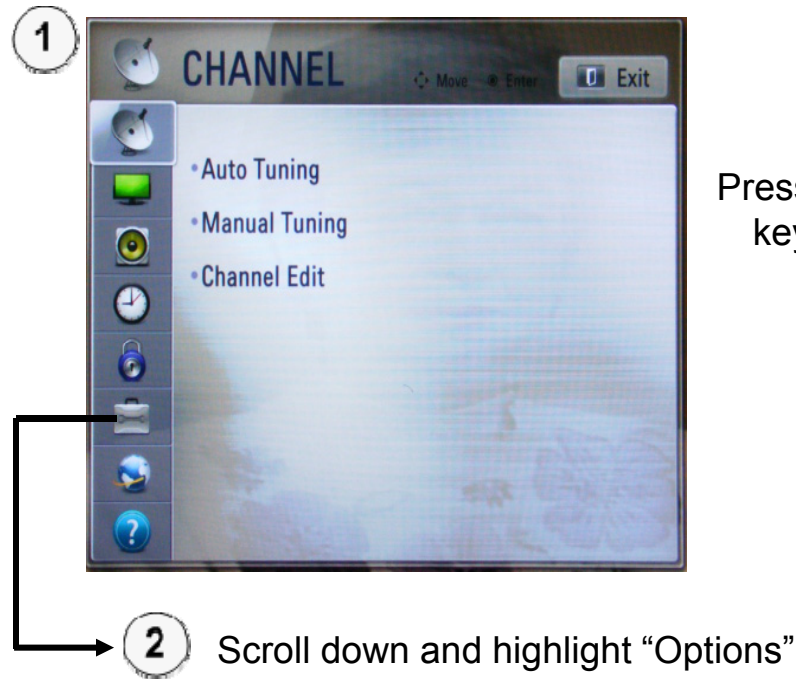
*** CAUTION:**

Do not remove AC power or the USB Flash Drive. Do not turn off Power, during the upgrade process.

Software Files are now available from LGTechassist.com

Manual Software Download:

Prepare the Jump Drive as described in the “USB Automatic Download” section and insert it into the USB port. Bring up the Customer’s Menu and scroll to “OPTIONS”, (Nothing should be highlighted on the right side). Press the “FAV” key 7 times to bring up the first screen for Manual Download Screen (Expert Mode).



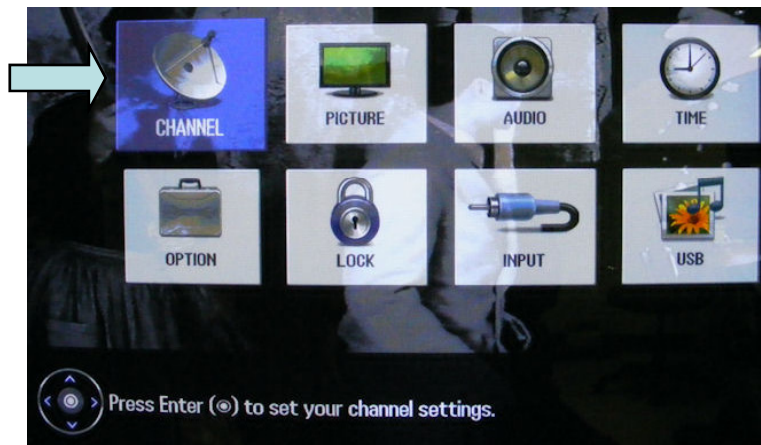
WARNING:

Use extreme Caution when using the Manual “Forced” Download Menu. Any file can be downloaded when selected and may cause the Main board to become inoperative if the incorrect file was selected.

Accessing the Host Diagnostic Screen

Use the Host Diagnostic screen to investigate the signal quality of a problem channel.

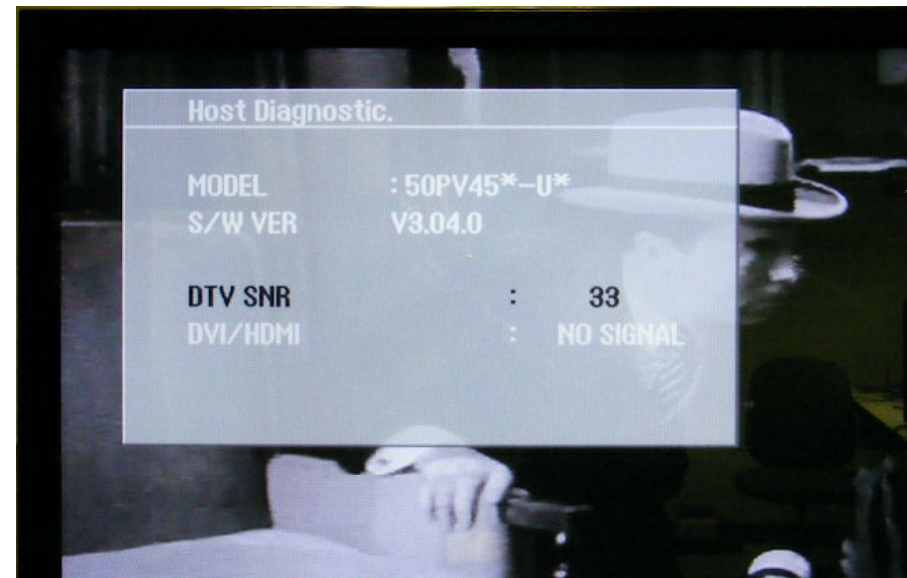
- 1) Place Television on the digital channel that may be showing problems.
- 2) Bring up the Customer's Menu. Highlight "CHANNEL". Press "ENTER" on the remote.



- 3) The "CHANNEL" Menu appears.



- 4) Press the (1) Key 5 to 8 times.
The Host Diagnostics screen appears.



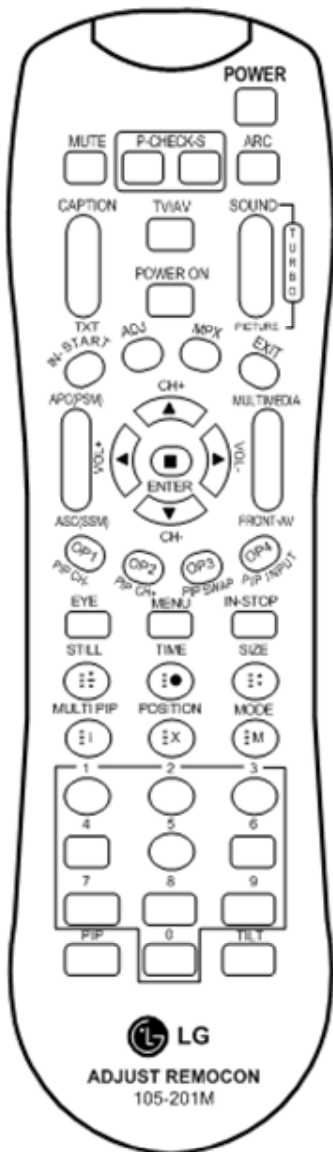
DTV SNR: Digital Television Signal to Noise Ratio

Over the Air: 8VSB (Above 20 is good)

Cable Digital: QAM 64 (Above 24 is good)

Cable Digital: QAM 256 (Above 30 is good)

Accessing the Service Menu



105-201M

To access the Service Menu.

- 1) You must have either Service Remote. p/n 105-201M or p/n MKJ39170828
- 2) Press “In-Start”
- 3) A Password screen appears.
- 4) Enter the Password.

Note: A Password is required to enter the Service Menu. Enter; **0000**

Note: If **0000** does not work use **0413**.



MKJ39170828

50PV450 Service Menu First Page

Bring up the Service Menu using the Service Remote
And pressing "In-Start" enter password 0413.

The screenshot shows the service menu for the 50PV450 Plasma TV. It is divided into two sections. The top section displays unit information and sensor status, while the bottom section lists various service options. Callouts are used to highlight specific items: 'Software Version' points to the S/W VER field; 'Unit's Total Time To Reset press "In Stop"' points to the UTT field; 'Country Group' points to the 0. TOOL OPTION field; and 'Intelligent Sensor Software Version' points to the V0.05(0x05) sensor version.

MODEL	: 50PV45*-U*	Sensor	V0.05(0x05)
S/W VER	V3.04.0		
UTT	: 2		
ADC CAL.			
RGB	: OK		
YPbPr(SD)	: OK		
YPbPr(HD)	: OK		
EDID	: RGB(OK) HDMI(1:0K 2:0K 3:OK)		

0. TOOL OPTION	:	6
1. AREA OPTION	:	USA
2. EPA	:	ON
3. POWER OFF HISTORY		
4. AUTO TEST		
5. BAUD RATE		9600
6. AUDIO EQ		ON
7. Bass EQ		ON
8. CHANNEL MUTE		ON
9. SYNC LEVEL		
10. DTV SNR		
11. POWER ERROR HISTORY		

50PV450 Power Off History

MODEL	: 50PV45*-U*	Sensor	V0.05(0x05)
S/W VER	V3.04.0		
UTT	: 2		
ADC CAL.			
	RGB : OK		
	YPbPr(SD) : OK		
	YPbPr(HD) : OK		
EDID	: RGB(OK) HDMI(1:0K 2:0K 3:OK)		

0. TOOL OPTION	:	6
1. AREA OPTION	:	USA
2. EPA	:	ON
3. POWER OFF HISTORY		
4. AUTO TEST		
5. BAUD RATE		9600
6. AUDIO EQ		ON
7. Bass EQ		ON
8. CHANNEL MUTE		ON
9. SYNC LEVEL		
10. DTV SNR		
11. POWER ERROR HISTORY		



POWER OFF HISTORY	
LAST HISTORY1	AC DET OFF
LAST HISTORY2	NO SIGNAL OFF
LAST HISTORY3	NO SIGNAL OFF
LAST HISTORY4	-----
LAST HISTORY5	-----
RCU OFF	: 0
KEY OFF	: 0
2HOUR OFF	: 0
NO SIGNAL OFF	: 2
AC DEC OFF	: 1
5VMNT OFF	: 0
TVLINK OFF	: 0
CLEAR ALL	

50PV450 DTV SNR Screen

MODEL : 50PV45*-U*
S/W VER V3.04.0 Sensor V0.05(0x05)
UTT : 2
ADC CAL.
RGB : OK
YPbPr(SD) : OK
YPbPr(HD) : OK
EDID : RGB(OK) HDMI(1:0K 2:0K 3:OK)

- 0. TOOL OPTION : 6
- 1. AREA OPTION : USA
- 2. EPA : ON
- 3. POWER OFF HISTORY
- 4. AUTO TEST
- 5. BAUD RATE 9600
- 6. AUDIO EQ ON
- 7. Bass EQ ON
- 8. CHANNEL MUTE ON
- 9. SYNC LEVEL
- 10. DTV SNR
- 11. POWER ERROR HISTO

**Highlight and
Cursor Right**

DTV SNR

DTV SNR : 33

Signal to Noise Ratio
8VSB (Above 20 is good)
QAM 64 (Above 24 is good)
QAM 256 (Above 30 is good)



50PV450 Power Error History

MODEL	: 50PV45*-U*	Sensor	V0.05(0x05)
S/W VER	V3.04.0		
UTT	: 2		
ADC CAL.			
	RGB : OK		
	YPbPr(SD) : OK		
	YPbPr(HD) : OK		
EDID	: RGB(OK) HDMI(1:0K 2:0K 3:OK)		

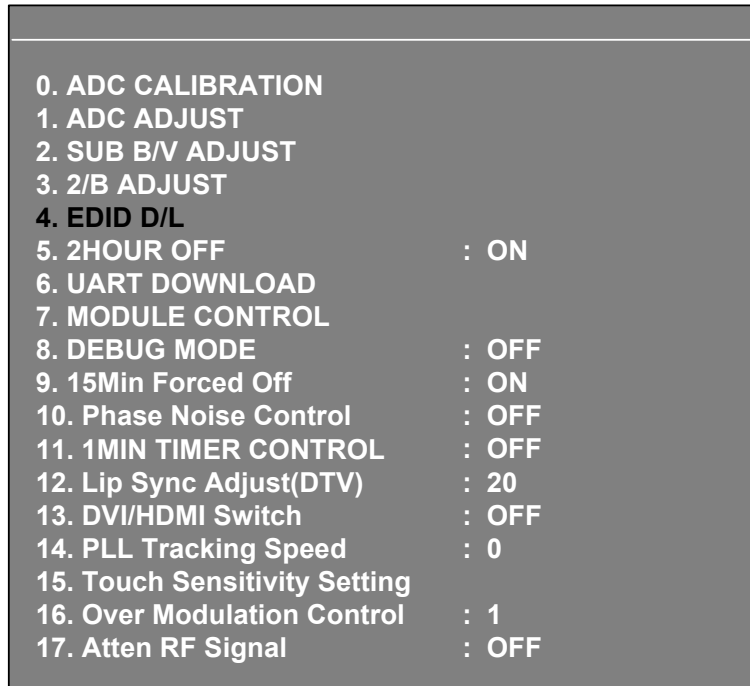
0. TOOL OPTION	:	6
1. AREA OPTION	:	USA
2. EPA	:	ON
3. POWER OFF HISTORY		
4. AUTO TEST		
5. BAUD RATE		9600
6. AUDIO EQ		ON
7. Bass EQ		ON
8. CHANNEL MUTE		ON
9. SYNC LEVEL		
10. DTV SNR		
11. POWER ERROR HISTORY		



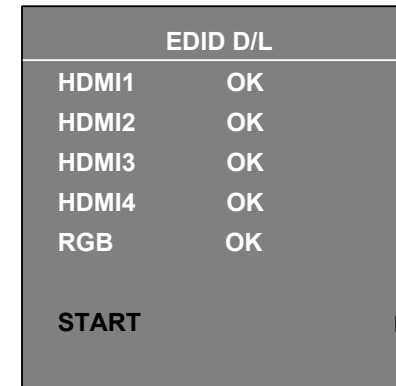
POWER ERROR HISTORY	
LAST HISTORY1	VA UVP
LAST HISTORY2	VS OCP
LAST HISTORY3	-----
PFC_DET Error	0
5V OVP	0
5V UVP	0
17V OVP	0
17V UVP	0
M5V OVP	0
M5V UVP	0
VS OCP	1
VS OVP	0
VS UVP	0
VA OCP	0
VA OVP	0
VA UVP	1
CLEAR ALL	

50PV450 Adjust Menu: Downloading EDID Data

- 1) Press "ADJ" key. Password is required
- 2) Scroll down and select item 4 EDID D/L



- 3) In the EDID D/L screen, press the Cursor Right key. EDID data is downloaded.



50PV450 Adjust Menu: Module Control Shows Control Board Information

Press the “ADJ” key on the service remote to bring up the Adjust Menu then enter the password.

Item 7 is the Module Control, highlight and cursor right.

0. ADC CALIBRATION	
1. ADC ADJUST	
2. SUB B/V ADJUST	
3. 2/B ADJUST	
4. EDID D/L	
5. 2HOUR OFF	: ON
6. UART DOWNLOAD	
7. MODULE CONTROL	
8. DEBUG MODE	: OFF
9. 15Min Forced Off	: ON
10. Phase Noise Control	: OFF
11. 1MIN TIMER CONTROL	: OFF
12. Lip Sync Adjust(DTV)	: 20
13. DVI/HDMI Switch	: OFF
14. PLL Tracking Speed	: 0
15. Touch Sensitivity Setting	
16. Over Modulation Control	: 1
17. Atten RF Signal	: OFF

Must leave Adj. Menu and return to update Temp.

MODULE CONTROL		
Module Temp.	35.5 Celsius	Temperature of the Panel
Module Name	50R3	
Module Rom Ver.	50R3_3DA1E0	Software Version
0. AV PC Mode	: AV	AUTO, PC
1. ISM Control	: AUTO	ON, OFF
2. Gama	: 0	1, 2, 3
3. PS Mode	: 13	Fixed
4. DPS Control	: OFF	ON
5. Rom Download	: OFF	ON

ROM Download when changed to ON blacks out the screen. Press the right cursor key once and 5 seconds later the pix appears.

50PV450 Lip Sync Screens

```
0. ADC CALIBRATION
1. ADC ADJUST
2. SUB B/V ADJUST
3. 2/B ADJUST
4. EDID D/L
5. 2HOUR OFF           : ON
6. UART DOWNLOAD
7. MODULE CONTROL
8. DEBUG MODE         : OFF
9. 15Min Forced Off   : ON
10. Phase Noise Control : OFF
11. 1MIN TIMER CONTROL : OFF
12. Lip Sync Adjust(DTV) : 20
13. DVI/HDMI Switch   : OFF
14. PLL Tracking Speed : 0
15. Touch Sensitivity Setting
16. Over Modulation Control : 1
17. Atten RF Signal    : OFF
```

Use the Right or Left cursor key to change.
Left to decrease. Right to increase.