

Chapter5 Factory mode and notice

Data in Factory mode is strictly prohibited to adjust without the author's approve because the data is closely relative to TV's performance.

1. Factory mode

This mode is mostly used in adjust balance and setup some special data.

2. Enter into factory menu

Entering "2580" continuously after pressed "INPUT", you can enter into factory mode menu.

2.1 Factory menu and setup

2.1.1 How to adjusting the factory menu

You can see a software version and its issued date displaying in the LCD TV.

Use "UP" / "DOWN" keys selecting the item and "LEFT" / "RIGHT" Keys debugging it.

2.1.2 The following items can be selected and adjusted of the factory menu about ls16:

Factory Menu

Video Quality

Picture Mode

Contrast

Brightness

Sharpness

Color

Save to EEPROM

White Balance

Source YPbPr

R-Gain

G-Gain

B-Gain

R-Offset

G-Offset

B-Offset
ADC Auto
MACE Setting
Input Source TV
Color Mode
Color Temp. Red
Color Temp. Green
Color Temp. Blue
Save to EEPROM
Advanced Setting (Don' t adjust this item)
About (software version and its issued date)

The following items can be selected and adjusted of the factory menu about
ls16W:

Video Quality

Picture Mode
Contrast
Brightness
Sharpness
Color
Save to EEPROM

White balance

R-Offset
G-Offset
B-Offset
R-Gain
G-Gain
B-Gain
Save to EEPROM

Factory Option

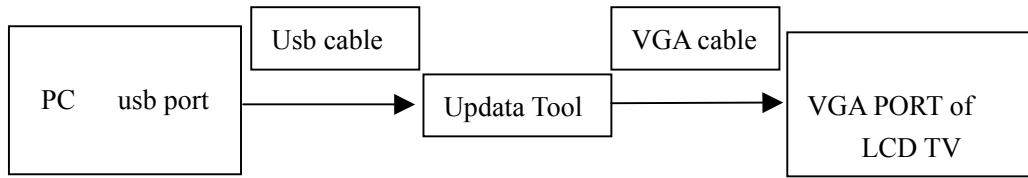
AGING Mode
Color Temp
Restore Default
(Software version)

YPBPR Phase

Phase

Chapter 6 The flow of software update and noticeable proceeding

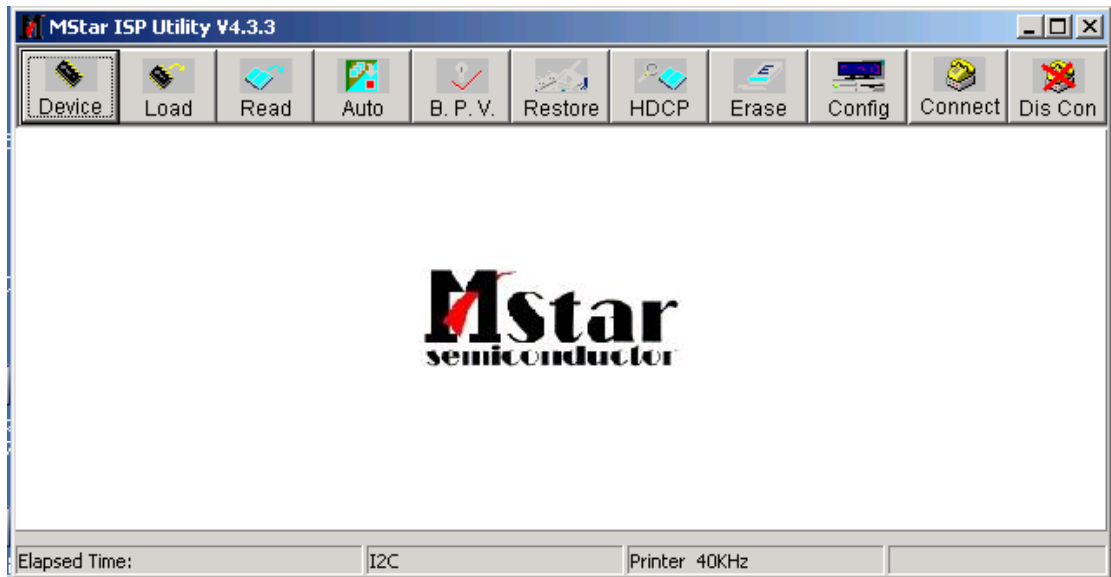
7.1 、 The connection of the equipment is shown bellow:



7.2、 software update flow

Use the application software ISP_Tool_V4.3.3.exe (the following digit means the version of this software)

Open this application software, as is shown bellow:

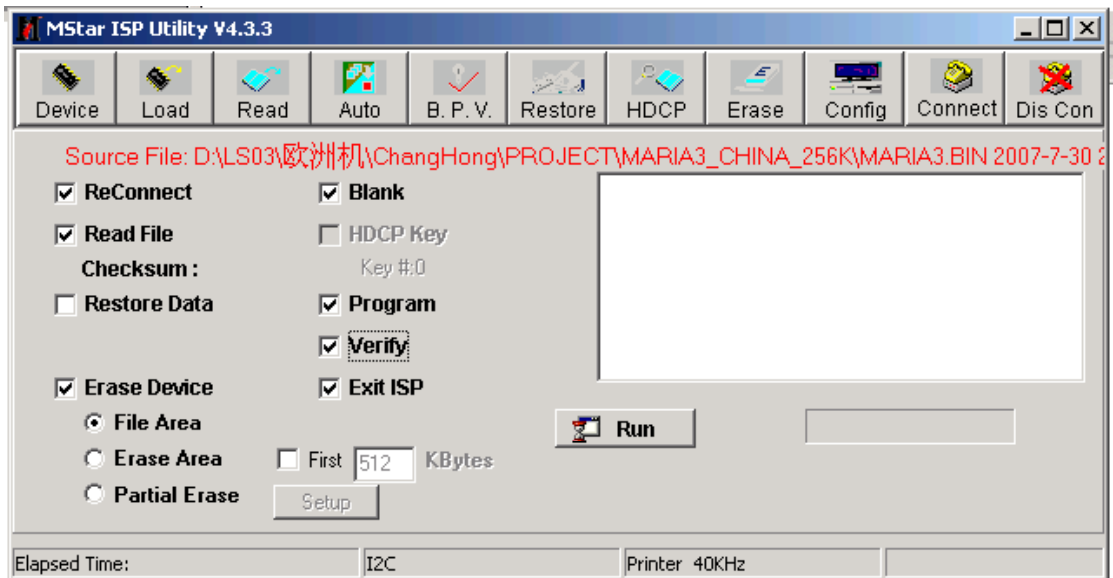
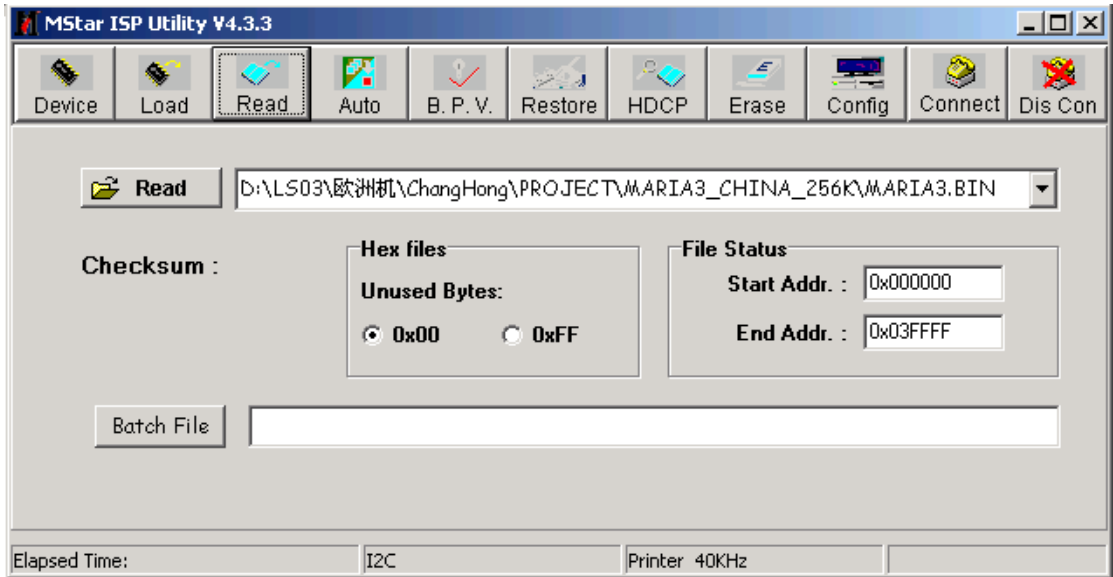


7.2.1 First, test the connection

Press the button “Connect”, the computer will display “ Device ” on the screen when it is well connected ,if not, please check the connection again.

7.2.2 Press button “Read” when the connection is OK to load the software

7.2.3 Press button “Auto” to write the software into the flash



The software will be provided according to custom' s request.